

NEW
BUILDING
BLOCKS

4

UNIT 5 EVERY DAY

Lesson 1 SCHOOL CAN BE FUN	School subjects + <i>every day / twice a week / on Monday / on Tuesday..</i>	6
Lesson 2 MY FAVOURITE PART OF THE DAY	The present simple with <i>I</i> + <i>always / usually / often / sometimes / never</i> (affirmative, negative, questions)	8
Lesson 3 ELLIOT AND TESS	The present simple with <i>she</i> and <i>he</i> (affirmative, negative, questions)	10
Lesson 4 AFTER SCHOOL	The present simple (revision)	14
Lesson 5 LET'S CHECK!	Revision	16

UNIT 6 GOING PLACES

Lesson 1 UNCLE PHIL'S RELATIVES	The present simple with <i>we</i> and <i>they</i> + <i>always / usually / often / sometimes / never</i> (affirmative, negative, questions)	18
Lesson 2 AT THE MARKET	Imperatives – commands and giving instructions Food <i>I usually have... for breakfast / lunch / dinner</i>	22
Lesson 3 SCIENCE REPORT: THE WEATHER	The present simple for facts and general truths	26
Lesson 4 A DAY AT THE BEACH	Imperatives	28
Lesson 5 LET'S CHECK!	Revision	30

UNIT 7 WHAT'S WRONG?

Lesson 1 GREG IS NOT FEELING WELL	The present simple (revision)	32
Lesson 2 AT THE VET'S	The present simple (revision)	36
Lesson 3 A ZOO VET	The present simple (revision)	38
Lesson 4 KEEP MOVING	Imperatives (revision)	40
Lesson 5 LET'S CHECK!	Revision	42

APPENDIX

Christmas THE CHRISTMAS BOARD GAME

44

Easter THE LITTLE RED HEN

46

SONG BANK

TAPESCRIPT

52

WORDLIST

56

SYMBOLS



LISTEN



POINT



REPEAT / SPEAK



READ



MATCH



WRITE



SING



SAY A CHANT



ACT OUT

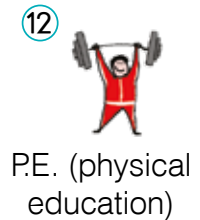
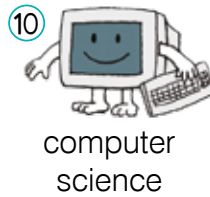
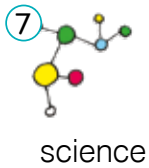
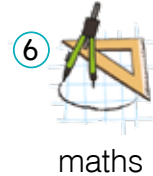


ACTION TIME

SCHOOL CAN BE FUN

VOCABOX

1 Listen and repeat. Which are your favourite subjects?



2 Listen and look at the chart. Who is talking? Say the correct name: Jessica, Greg, Luke.

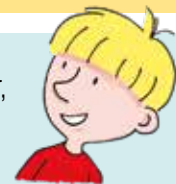
- 1 Art and music are OK.
- 2 My favourite subjects are English and French.
- 3 My favourite subjects are computer science and P.E.
- 4 I have problems with science and maths.
- 5 I have volleyball practice twice a week.
- 6 I'm good at maths.

3 Read the text and the missing sentence numbers from Task 2 in the right places. Then listen and check.




Jessica: School is great. I learn something new every day and I have fun with my friends and teachers. (2). I'm excellent at reading and writing stories. (?) I'm very busy, but I always do my homework.

Greg: School is OK. It can be fun, too. I like my school friends and my teacher, but I don't like doing my homework. (?). (?), too. I have swimming practice every day, but I always have time to play computer games.



Luke: School can sometimes be really boring. Tests, homework... It's better to play in the park. (?) but (?). My favourite day of the week is Saturday. Why? No school and it's time for my ice hockey practice!

4  Kim is interviewing Luke about his “dream school”. How often does he have these activities? Listen and match.

drawing classes karaoke singing	once a month
hip-hop classes costume parties	twice a week
computer games	once a week
maths	every day
visits to the cinema	twice a day

5 Now look at Luke’s timetable. Guess the missing activities.

Monday	Tuesday	Wednesday	Thursday	Friday
computer games	hip-hop	drawing	computer games	karaoke
drawing	computer games	computer games		drawing
karaoke	karaoke	costume party	drawing	computer games
	computer games	computer games	karaoke	computer games
costume party			computer games	

6 Look at the timetable and talk about Luke’s “dream school”. Start like this:

Luke has _____ once a week / twice a week / every day / once a month...

Luke has _____ on Monday / on Tuesday / on...

LANGUAGE LAB

How often? Every day. Twice a day. Three times a week. Once a month.

When? On Monday. On Wednesday. On Saturday.

7 Talk about your school timetable.

When do you have English?
How often do you have P.E.?
Which subjects do you have on Friday?
How often do you go to the cinema with your class?



LET'S SPEAK!

MY FAVOURITE PART OF THE DAY

1 What's your favourite part of the day?



MORNING



AFTERNOON



EVENING

2 Listen and point to the pictures in the right order. What is Jessica's favourite part of the day?



I make my bed and I go to the kitchen.



I run to school. I can't wait to see my friends and teachers.



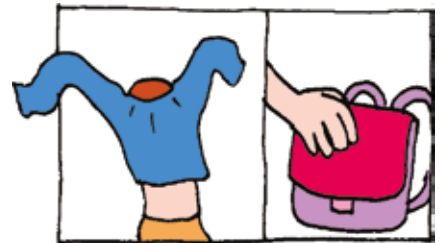
Then I brush my teeth and I wash my face.



I usually have cornflakes for breakfast.



I'm always happy in the morning. I wake up at 7 o'clock.



I put on my clothes and I take my schoolbag.

3 Listen and choose the right answers. What is Luke's favourite part of the day?

I always feel great in the evening / afternoon. I usually go out to the park / pet shop. I ride a bike or I roller-skate / play football. I sometimes stay at home and I play / watch TV. Every Monday / Sunday afternoon I listen to my favourite radio show. It's about hip-hop. I don't study every afternoon, but I usually do my homework / play games. I also help my mum in the kitchen / garden. We make dinner / lunch together.






LANGUAGE LAB

I **wake up** at 7 o'clock.
 I usually **go out** to the park.
 I **don't study** every afternoon.

don't = do not

4 What's true for you? Read and say in the right sentence.

	IN THE MORNING	IN THE AFTERNOON	IN THE EVENING
1 I make my bed.			
2 I don't have breakfast.			
3 I brush my teeth.			
4 I watch TV.			
5 I don't go out and play.			
6 I don't go to school.			
7 I have dinner.			
8 I don't do my homework.			

5  Greg's favourite part of the day is the evening. Jessica wants to find out why. Listen and point to the questions you hear.

- 1 Do you play computer games?
- 2 Do you do your homework?
- 3 Do you play with your friends?
- 4 Do you play any sports?
- 5 Do you go to the cinema?
- 6 Do you watch TV?



LANGUAGE LAB

Do you **watch** TV in the evening? Yes, I **do**. No, I **don't**.




LET'S SPEAK!

6 Work with a partner. Ask and answer the questions.

- | | | |
|--|------------|--------------|
| 1 Do you have breakfast in the morning? | Yes, I do. | No, I don't. |
| 2 Do you brush your teeth twice a day? | Yes, I do. | No, I don't. |
| 3 Do you play any sports? | Yes, I do. | No, I don't. |
| 4 Do you watch TV every day? | Yes, I do. | No, I don't. |
| 5 Do you sometimes forget your homework? | Yes, I do. | No, I don't. |
| 6 Do you make your bed in the morning? | Yes, I do. | No, I don't. |
| 7 Do you play computer games every day? | Yes, I do. | No, I don't. |
| 8 Do you go to bed late? | Yes, I do. | No, I don't. |

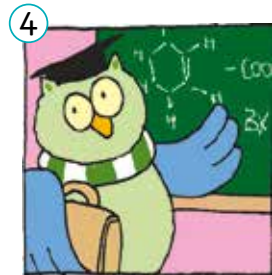
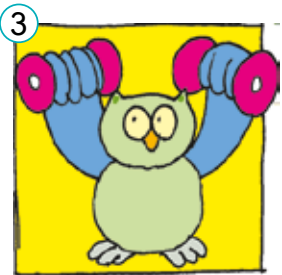
ELLIOT AND TESS

1  Listen and point to the right pictures. Then match the pictures to the texts. What's unusual about Tess' day?



She doesn't brush her teeth, but she works out. It's good for her body.

Then she visits her friend Owly. He knows everything about magic. She learns a new magic trick every day.



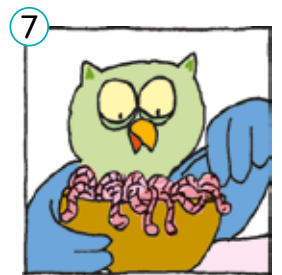
It's lunch time. She goes to McOwl's. She has a big mosquito sandwich.

She doesn't have a big breakfast. Just a glass of Superowl Juice.



She wakes up late. It's 10 o'clock in the evening. Good morning, Tess!

She has a worm salad for dinner. Yummy!



Then she goes to Owl Night School. She is a science teacher.

Then she watches *Owlcop*, her favourite TV show.



Before she goes to sleep, she says "hello" to the sun. Oh, it's 7 o'clock in the morning! Good night, Tess.

After that she practises some new tricks. Oh, no! It doesn't work.

2 Say: true (T) or false (F).

- | | |
|--|---|
| 1 She wakes up at 10 o'clock in the morning. | 5 She doesn't like worm salad. |
| 2 She is a teacher. | 6 She watches <i>Owlcop</i> in the evening. |
| 3 She doesn't have lunch. | 7 Her magic tricks always work. |
| 4 Owly knows a lot about magic. | 8 She goes to sleep in the morning. |

LANGUAGE LAB


She **wakes** up late.
 She **goes** to Owl Night School.
 She **watches** *Owlcop*.

She **doesn't brush** her teeth.
 She **doesn't have** a big breakfast.

doesn't = does not

3 Correct the sentences about Tess' day.

- | | |
|--|---|
| 1 Tess wakes up at 9 o'clock. | Tess <u>doesn't wake up</u> at 9 o'clock. |
| 2 She doesn't have juice for breakfast. | She ... juice for breakfast. |
| 3 She doesn't work out . | She ... |
| 4 She brushes her teeth. | She ... her teeth. |
| 5 She doesn't watch <i>Owlcop</i> . | She ... <i>Owlcop</i> . |
| 6 She doesn't go to sleep in the morning. | She ... to sleep in the morning. |

4  Tess is at school. Her pupils have got a lot of questions about Elliot's day. Listen and read. Choose the correct answers.

Owl 1: Does Elliot wake up late?

Tess: **Yes, he does.** / **No, he doesn't.** He wakes up at 7 o'clock in the morning.

Owl 2: Does he have a big breakfast?

Tess: **Yes, he does.** / **No, he doesn't.** He has orange juice, toast and an egg.

Owl 3: Does he work out?

Tess: **Yes, he does.** / **No, he doesn't.** But he brushes his teeth.

Owl 4: Does he go to school?

Tess: **Yes, he does.** / **No, he doesn't.** But he is not a teacher.

Owl 5: Does he like mosquito sandwiches?

Tess: **Yes, he does.** / **No, he doesn't.** He likes fish and chips.

Owl 6: Does he visit Owly?

Tess: **Yes, he does.** / **No, he doesn't.** He stays at home and he reads books.

Owl 7: Does he watch *Owlcop*?

Tess: **Yes, he does.** / **No, he doesn't.** He watches documentary films.

Owl 8: Does he go to bed in the morning?

Tess: **Yes, he does.** / **No, he doesn't.** He's not an owl. He goes to bed at 10 o'clock in the evening.





LANGUAGE LAB

Does he **go** to school?
Does he **watch** *Owlcop*?

Yes, he **does**.
No, he **doesn't**.

5 Elliot is thinking about Tina. Copy the completed questions in your notebook and find out what Elliot wants to know about Tina.



~~wake up~~

visit

go

watch

eat

think

read

watch

- | | |
|--|-----------------------------------|
| 1 Does she <u>wake up</u> early? | Yes, she does. / No, she doesn't. |
| 2 Does she ... to school by bus? | Yes, she does. / No, she doesn't. |
| 3 Does she ... fish and chips? | Yes, she does. / No, she doesn't. |
| 4 Does she ... her friends every day? | Yes, she does. / No, she doesn't. |
| 5 Does she ... documentary films? | Yes, she does. / No, she doesn't. |
| 6 Does she ... books about science? | Yes, she does. / No, she doesn't. |
| 7 Does she ... the stars before she goes to bed? | Yes, she does. / No, she doesn't. |
| 8 Does she ... about me? | Yes, she does. / No, she doesn't. |

6 Read Tina's e-mail to Elliot and choose the right answers in Task 5.

To: Elliot

From: Tina

Hi Elliot,
In Georgia school starts at 9 o'clock, so I get up early every day. I have breakfast, and I go to school. I don't go to school by bus. I walk to school with my best friend Ira. We have lunch at school. We don't have lunch at home. I usually have fish and vegetables. I don't like meat. After school I do my homework and I sometimes visit my friends. I don't usually watch TV because I have hip-hop classes. I go swimming, too. But I read a lot. I like books about science. I'm very tired in the evening so I go to bed early. Before I go to bed I watch the stars and I think about... well, I think about someone I like. What about you?
Write soon!
Tina

LET'S SPEAK!

BAC

7 Ask these questions and say the names of your classmates.



	Name
1 Who likes spiders?	?
2 Who doesn't like broccoli?	?
3 Who doesn't watch TV every day?	?
4 Who has his or her birthday in October?	?
5 Who eats an apple every day?	?
6 Who goes to bed at 8 o'clock?	?
7 Who writes a diary?	?
8 Who knows 10 capital cities?	?
9 Who doesn't live in a house?	?
10 Who plays the piano?	?
11 Who writes with his or her left hand?	?
12 Who sleeps with a toy?	?
13 Who doesn't wash his or her hands before lunch?	?
14 Who wants to be a teacher?	?

8 Write a report about your class.
 Start like this: Iva likes...
 Ivan doesn't like...



CULTURE CORNER

49 Look at the photo. Listen and read.

Children in Great Britain wear school uniforms. Every school has a different uniform.

- 1 What are the children wearing?
- 2 Would you like to wear a uniform of your school?
- 3 Can you design a uniform for your school?

